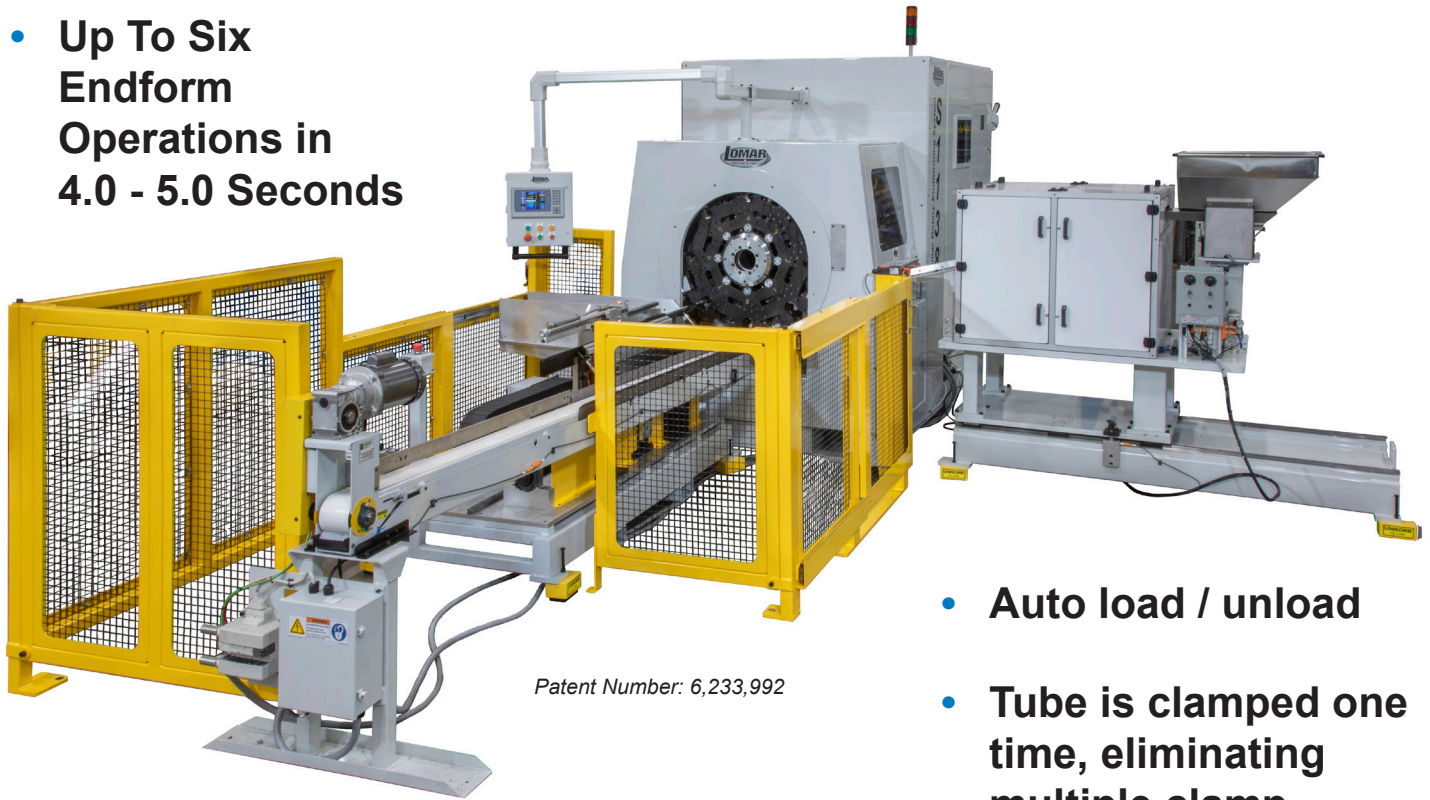




# S1138 Multi-Hit Rotary Endform Machine

Designer, Manufacturer and Integrator of Machines and Tooling

- **Up To Six Endform Operations in 4.0 - 5.0 Seconds**



Patent Number: 6,233,992

The S1138 Multi-Hit Rotary endforming machine is designed for high volume tube endforming applications.

The S1138 utilizes an 8-station, servo controlled indexing turret for part transfer. With each 45° index of the turret, parts are transferred from an auto load station, to multiple endforming stations.

Stations are factory configurable with hydraulic ram endform stations, a servo controlled roll grooving and/or cutting station, component feed stations and assembly stations.

Once clamped, tubes are not released or re-clamped until all operations at each station are completed.

The result is a completed, finished part, with up to 6 endform operations, and without excessive diameter reduction, in 4 - 5 seconds (*application dependant*).

Proven technology combined with Lomar's patented rotary part transfer system enables the S1138 to achieve unparalleled performance.

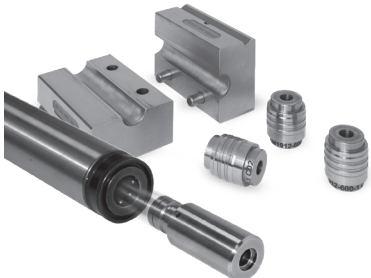
- **Auto load / unload**
- **Tube is clamped one time, eliminating multiple clamp reduction**
- **Servo Indexing Part Transfer System**



# Features



HMI Control Panel



Endform Tooling Design & Manufacture

- Allen-Bradley Panelview controller (shown) has the capability to retain multiple part configurations making change-over quick and efficient.
- 8-Stations, Auto Load & Unload, 6-factory configurable stations for endforming, roll grooving or cutting, component feeder and assembly.
- Self-contained hydraulic power unit with forced air cooler.
- Easily accessible quick-change tooling.
- Utilizes Lomar patented quick change endform punch tooling cartridges for fast and efficient change over.
- Mechanical toggle and link mechanism used to close standard 4" clamp blocks.

# Capabilities



- Material: Aluminum, Mild Steel, Stainless Steel, Copper and Brass.
- Diameters: 5/16" through 3/4".
- Wall Thickness: Aluminum up to .065 wall, steel up to .049 wall.
- Shortest/Longest Tube: 7" to 60" long.

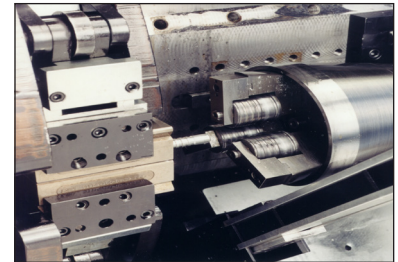
The above are general guide lines, if you have other applications we will be glad to review them.

# Options



Adjustable Auto Load Tube Hopper

- Adjustable tube hopper (shown) can accommodate a wide range of tube diameters and lengths.
- Perimeter guarding, area scanner, and light curtains.



Servo Grooving Station

- Electric servo grooving station (inset photo) with variable speed spindle drive for rolling or cutting grooves.
- Bowl feeders for ferrules, blocks, & inserts.
- Flood lubrication system
- CE/CSA/NR12 Compliance available.
- Inspection systems.



135 Main Street, P.O. Box 128  
 Horton, MI 49246 U.S.A.  
 Phone: (517) 563-8136  
 sales@lomar.com  
 www.lomar.com

# Specifications

**DIMENSIONS:**  
 108" L (2743mm) x 80" W (2032mm)  
 x 88" H (2,235mm)  
**SHIPPING WEIGHT:** Approx. 8,000 lbs  
**ELECTRICAL REQUIREMENTS:**  
 480V 3 PH, 60Hz  
*(Other configurations are available)*  
**ELECTRIC MOTOR:** 40 HP

**HYDRAULIC PUMP:** 36 GPM  
**RESERVOIR CAPACITY:**  
 80 U.S. Gallons  
**CYLINDER TONNAGE:** 3.65 tons  
 @1,500 PSI  
**STROKE LENGTH:** 5"  
**MACHINE CYCLE TIME:**  
 Approximately 4 -5 seconds  
*(Application dependant)*